

The background features a dark blue gradient with a subtle pattern of white stars. Overlaid on this are several technical diagrams in a lighter blue color. These include circular gauges with numerical scales (e.g., 140, 150, 160, 170, 180, 190, 200, 210, 220, 230, 240, 250, 260), concentric circles, and dashed lines with arrows indicating direction or flow. The overall aesthetic is clean, modern, and technical.

# BACK TO THE JUNGLE

CHRISTOPHER MARTE

WMMN 642 15022 3D ANIMATION AND MODELING II

# MODELED CHARACTERS



# STORYBOARD

## PAGE 1

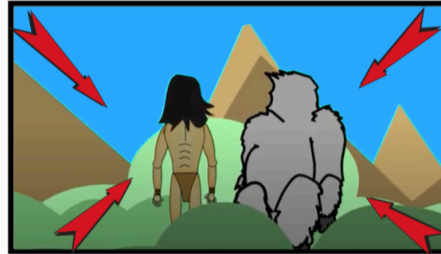
Title From Jungle to Jungle

Scene 1

Page 1



Establishing shot: Characters are seen in the distance staring at the mountains from tree tops with a wide shot.



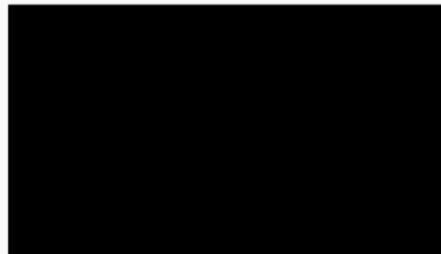
Long Shot: Camera zooms in to long shot of the backs of the characters.



Medium Shot: Camera cuts to medium shot of the rising sun rays appearing over the characters.



Long Shot: Cut to another long shot of sun and title rising from beyond the mountains.



Fade to Black.



Long Shot: Cut to long shot of human character riding ape character as they forage for food.



Medium Shot: Cut to shot of an object falling from the sky in the distance leaving a trail of smoke.



Long Shot: Cut to characters stopping and turning their heads to observe the smoke in the distance



Medium Shot: Camera zooms into a medium shot of characters staring at the smoke.

# STORYBOARD

## PAGE2

Title From Jungle to Jungle

Scene 2

Page 2



Medium shot: Cut to medium shot of silhouettes as human characters points to the smoke.



Long Shot: Cut to shot of characters running through the dense trees towards the smoking object.



POV Shot: Cut to POV shot as characters approach their destination. POV is of human character.



POV Shot: Ape character then moves aside 2 branches revealing a helicopter that crashed on top of a tree.



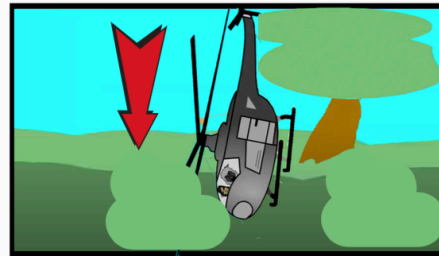
Close-Up: Cut to close up of characters facial expression change from curious to surprised.



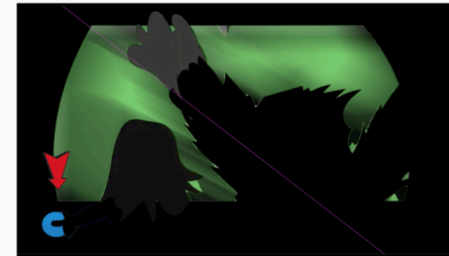
Medium Shot: Cut to medium shot of character silhouettes as the human character open the door..



Long Shot: Camera pans out as both characters enter the helicopter.



Long Shot: When the characters are inside, the helicopter falls out of the tree.



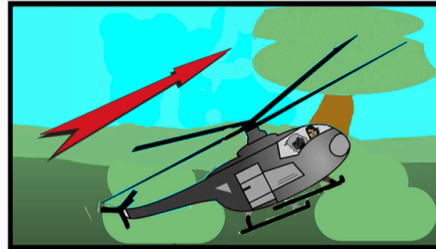
Over Sholder Shot: Cut to shot of characters as they free fall. Then the human character press a button turning on the propellers.

# STORYBOARD PAGE 3

Title From Jungle to Jungle

Scene 3

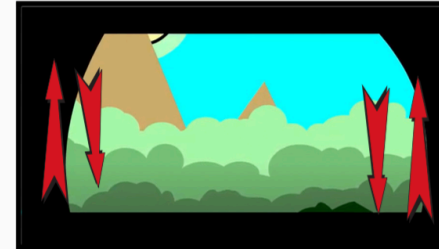
Page 3



Long shot: Cut to long shot of characters flying helicopter out of the forest. The propellers break some trees.



Long shot: Cut to long shot of characters flying helicopter around the forest. Camera pans right as they move right.



POV Shot: Cut to POV shot of characters on their journey. The camera jitters up and down.



Medium Shot: Cut to medium shot of the front view with ape character waving his arms as the fly.



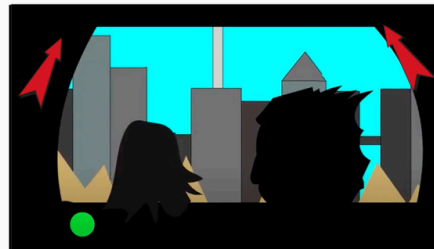
Over Shoulder Shot: Cut to over shoulder shot of characters approaching the mountains.



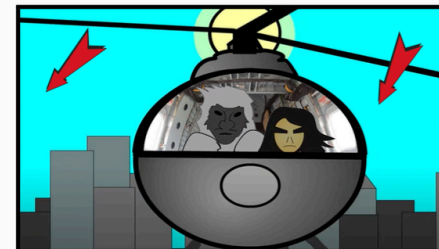
Over Sholder: The camera pans as the helicopter starts to fly over the mountains as they leave the forest.



Medium Shot: Cut to medium shot of characters navigating through the mountains..



Over Shoulder Shot: The camera pans and the city fully comes into view as characters start leaving the mountains .



Medium Shot: Cut to shot of characters as they enter the city. They are amazed of the tall buildings

# STORYBOARD PAGE 4

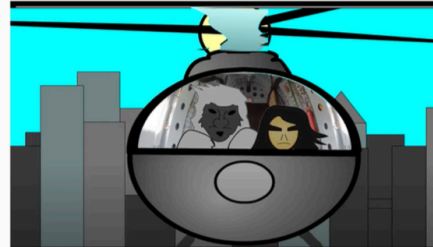
Title From Jungle to Jungle

Scene 3

Page 4



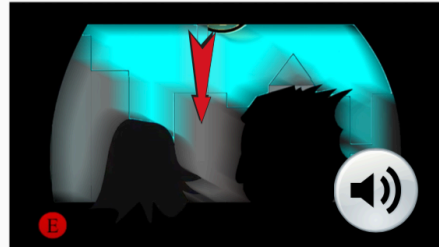
Over Shoulder: Cut to shot of the inside as a siren is heard and a red light light starts flashing.



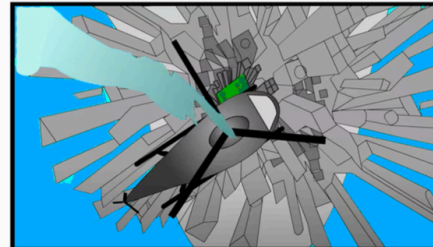
Medium Shot: Cut to shot of the the propellers come to a sudden stop and emit alot of smoke .



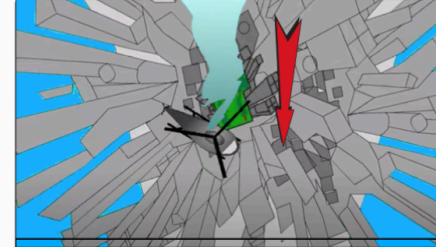
Close Up Shot: Cut to close up characters start to get scared.



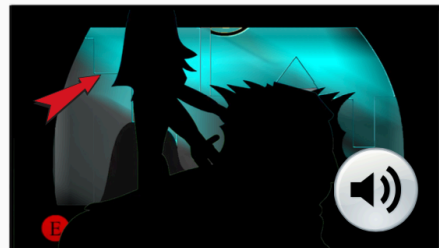
Over Shoulder Shot: Cut to over shoulder shot of characters start to free fall.



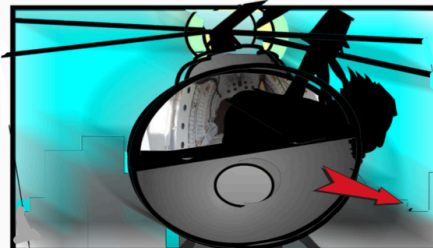
Birds Eye Shot: Cut shot of helicopter over the city start to descend.



Birds Eye Shot: The helicopter gets closer and closer to the ground as it crash lands..



Medium Shot: Predicting his eminent demise the human character jumps on the ape. .

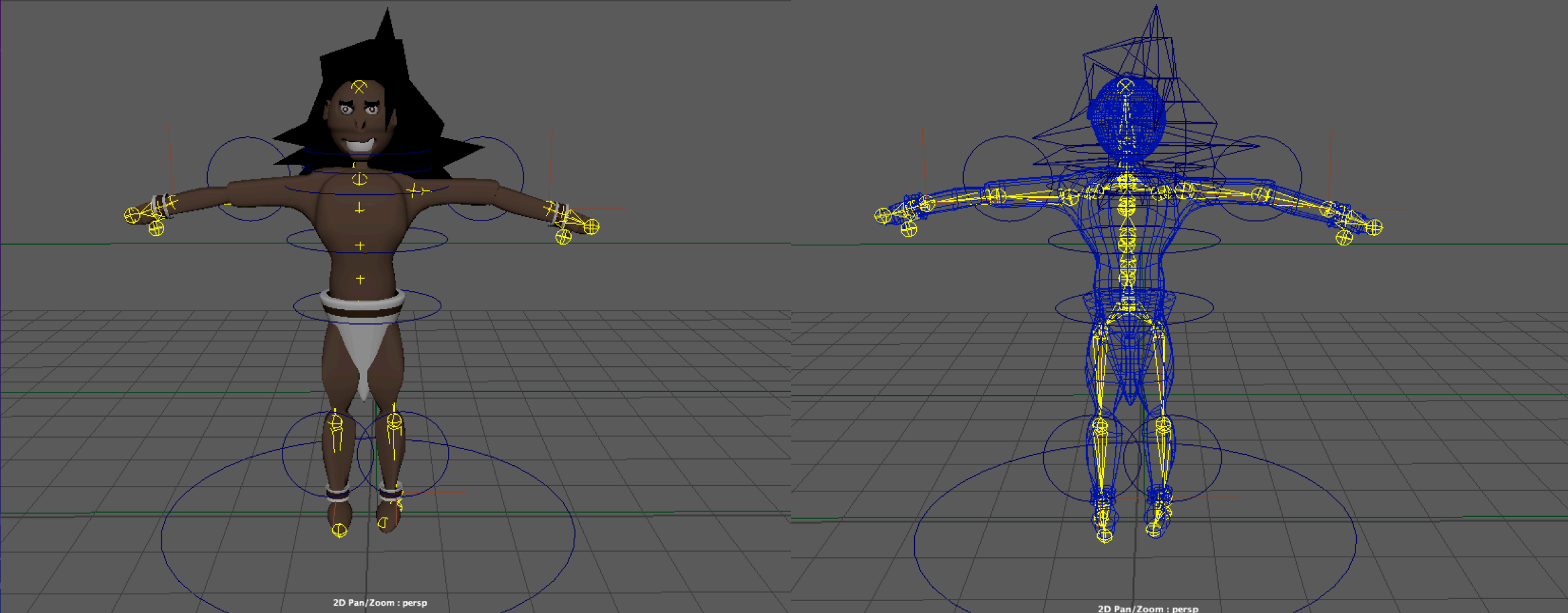


Long Shot: Cut shot of charcters jumping out of window right before the crash landing .

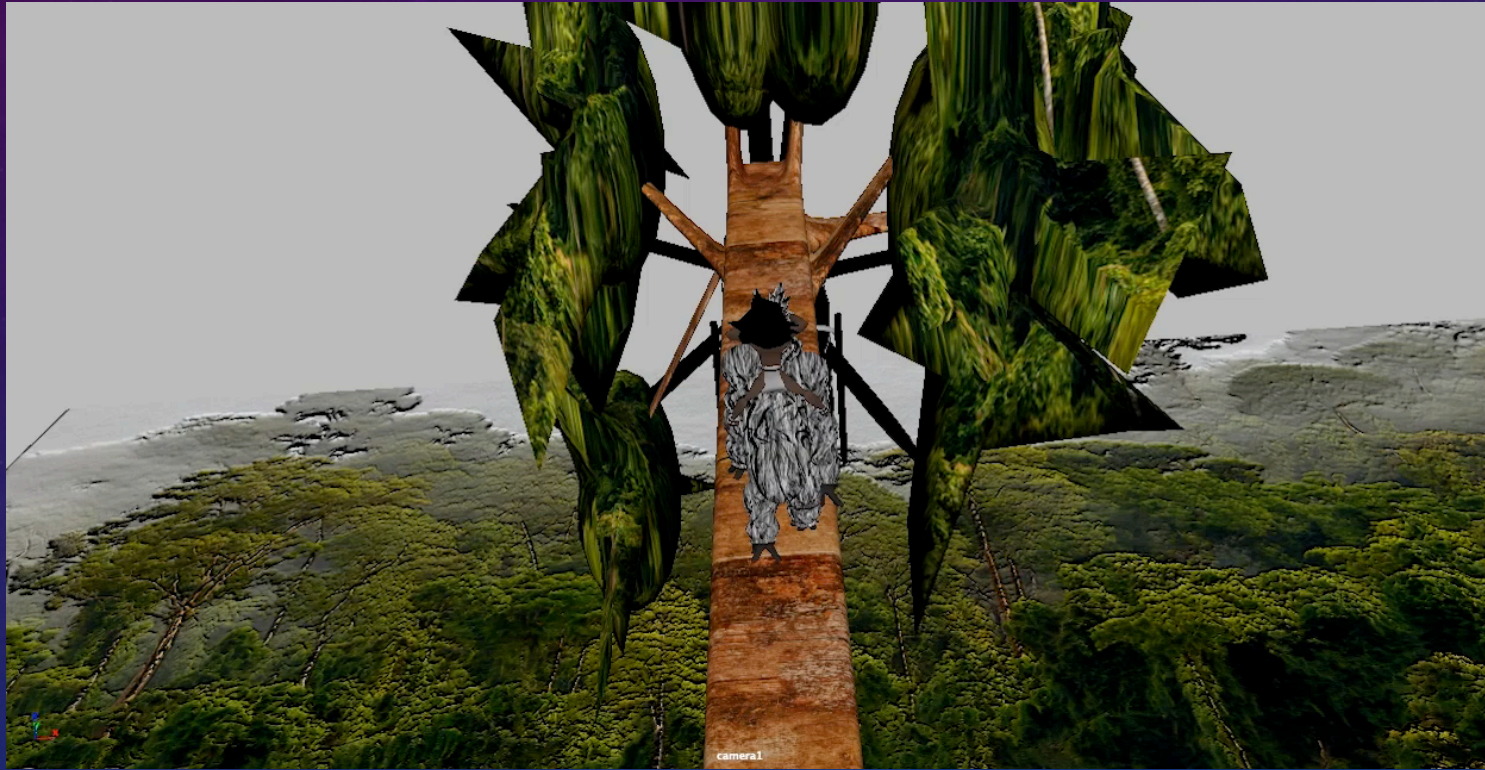


Long Shot: Cut to shot of characters as they jump onto a tree the helicopter goes up in flames.

# RIGGED MODEL



# ENVIRONMENT





THE END

The background is a blue gradient with a starry pattern. It features several faint technical diagrams, including a large circular gauge with numerical markings (100, 110, 120, 130, 140, 150, 160, 170, 180, 190, 200, 210) and arrows, and other smaller circular elements with dashed lines and arrows.